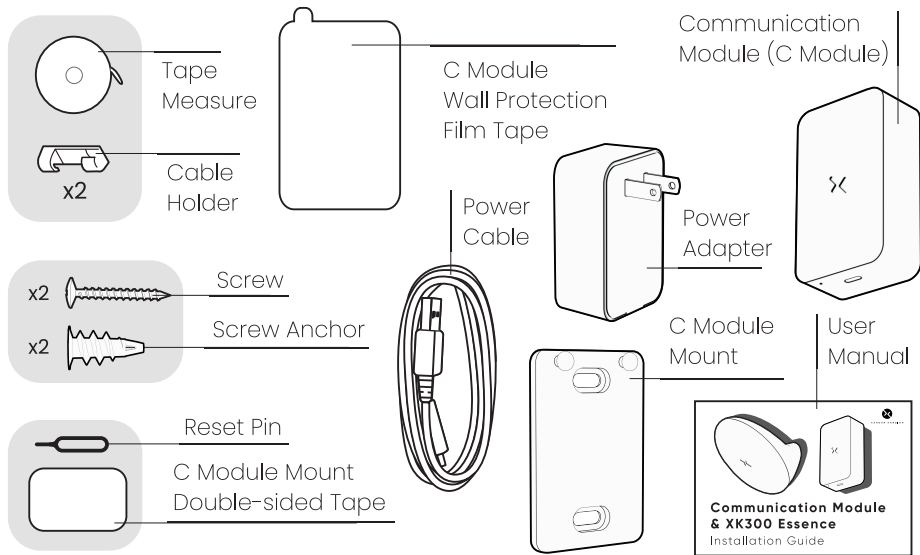


# **Communication Module & XK300 Essence**

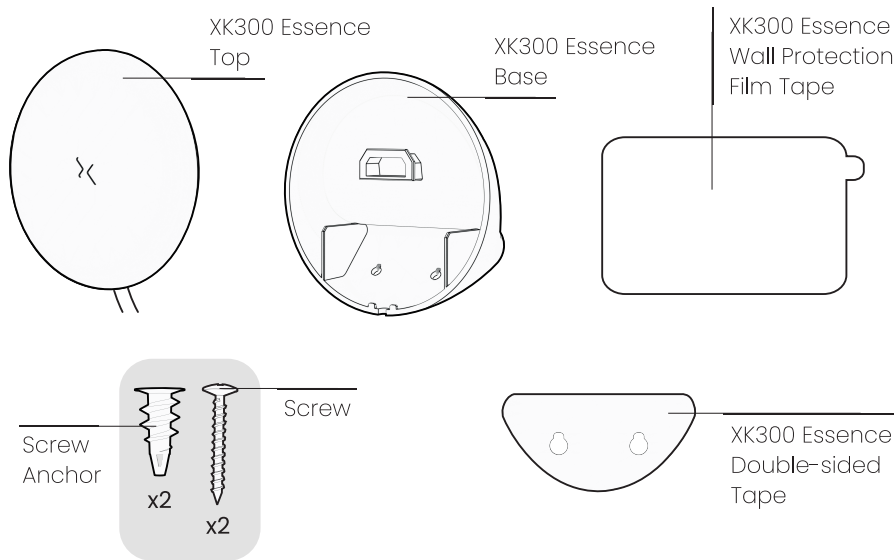
## Installation Guide



# 01 Communication Module Box



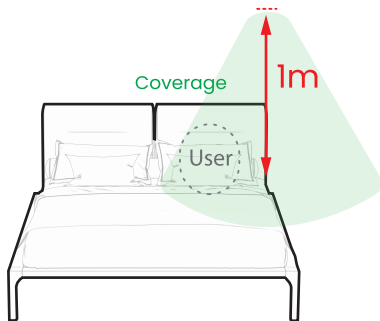
# 02 XK300 Essence Box



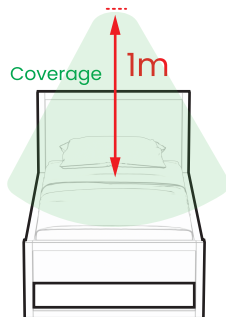


## 03 XK300 Essence

1. Select the XK300 Essence installation point based on your bed type.



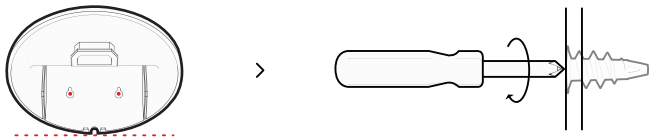
◀Shared Bed▶



◀Single Bed▶

\* If you use the bed alone, place the XK300 Essence in the center of the bed.

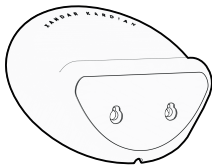
2. Place the base at the installation point, mark the hole positions, remove the base, and insert the screw anchors.



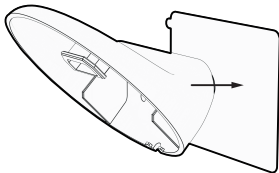
Place the base back over the anchors. Insert the screws in both holes and secure them with a driver.



**OR** Stick the XK300 Essence Double-sided Tape to the back of the base.

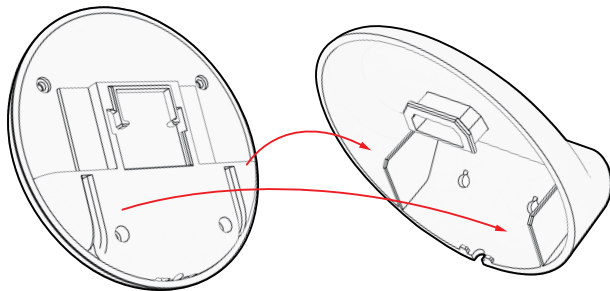
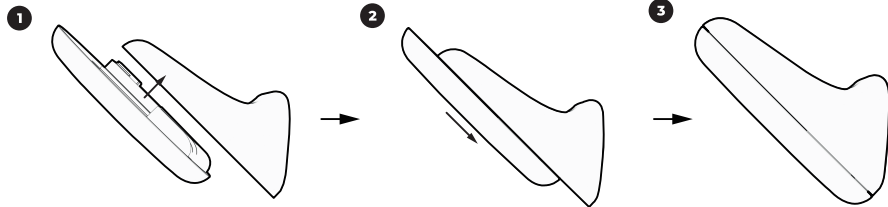


Attach the Wall Protection Film Tape to the wall, then press the base firmly onto it.



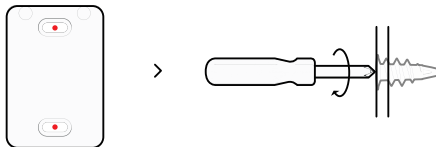
**\* When using tape, note that depending on the wall material, the XK300 Essence Wall Protection Film Tape may come off easily. Always check the strength of the tape before use.**

3. Align the top to the base and slide in the top to the base.

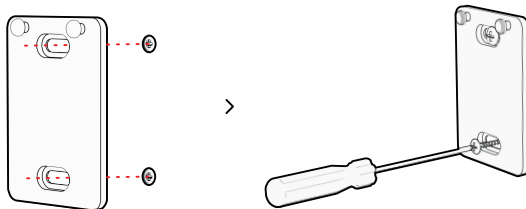


# 04 Communication Module

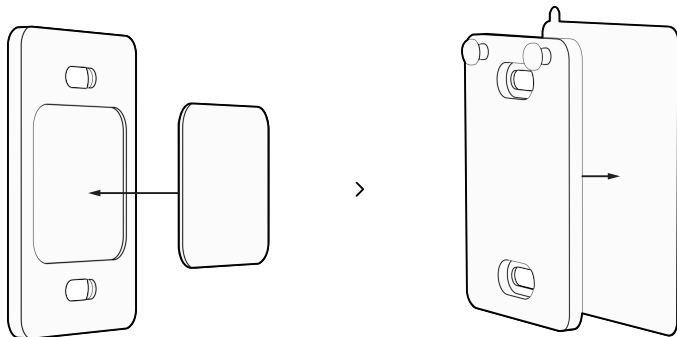
1. Place the C Module Mount near to the outlet, mark the hole positions, remove the mount, and insert the screw anchors.



2. Place the mount back over the anchors. Insert the screws in both holes and secure them with a driver.

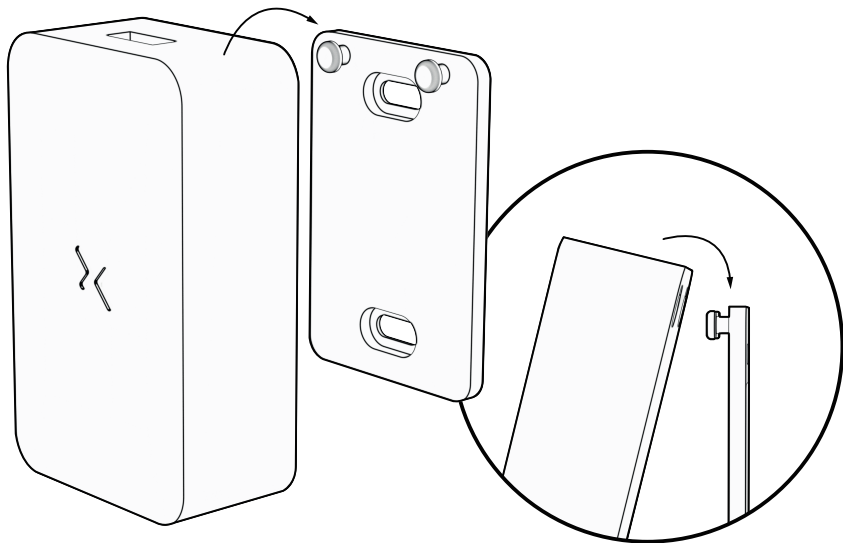


**OR** Stick the C Module Mount Double-sided Tape to the back of the mount.  
Attach the C Module Wall Protection Film Tape to the wall, then press the mount firmly onto it.

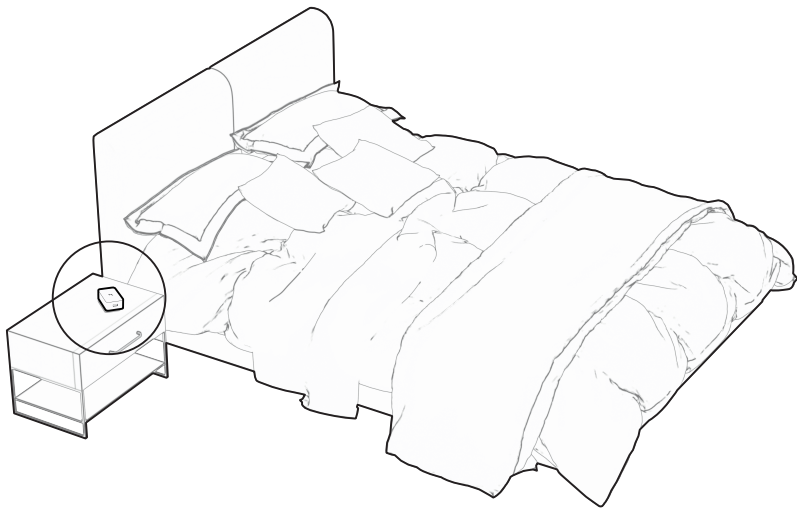


**\* When using tape, note that depending on the wall material, the C Module Wall Protection Film Tape may come off easily. Always check the strength of the tape before use.**

3. Hang the module onto the mount.

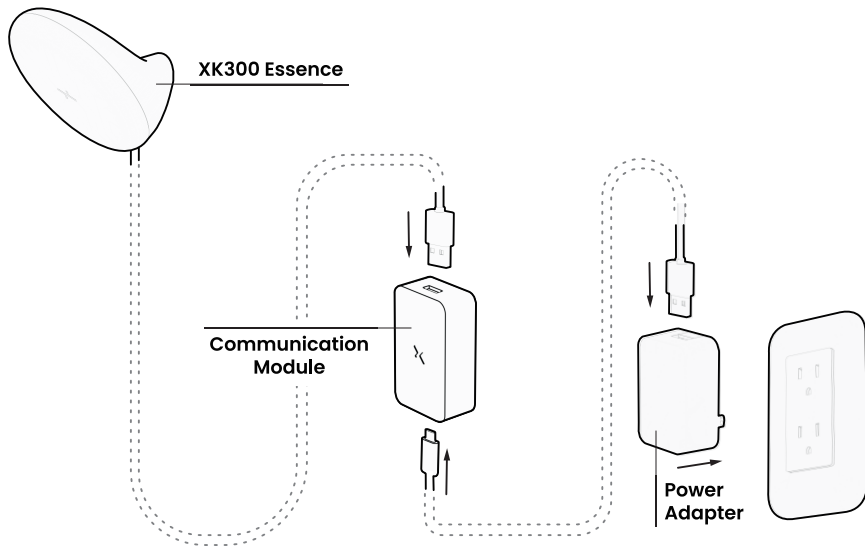


**\* The Communication Module could also be positioned on the side table.**

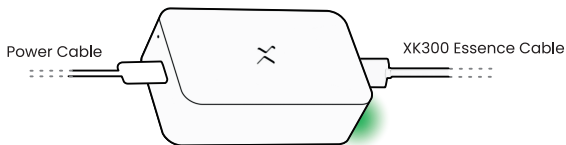




# 05 Assembly



# 06 LED Status Check



Normal operation

> No issue



Booting

> Wait a moment



Communication failed

> Reconnect the power cable



Cable connection failed

> Reconnect the XK300 Essence cable

**\* If the issue persists, contact XK support team.**

**\* Software configuration instructions will be provided separately for each connectivity interface. (Wi-Fi, BLE, or LTE)**





[www.xkcorp.com](http://www.xkcorp.com)